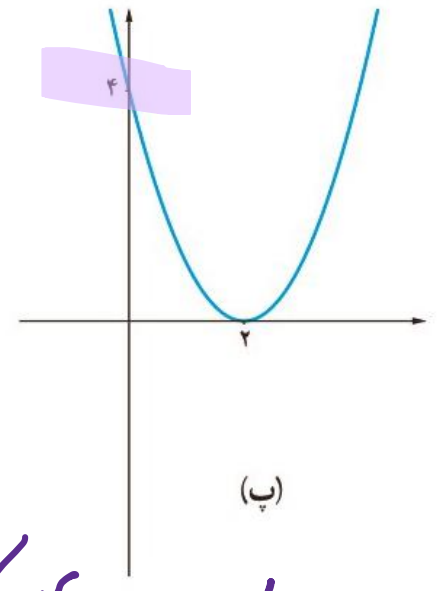
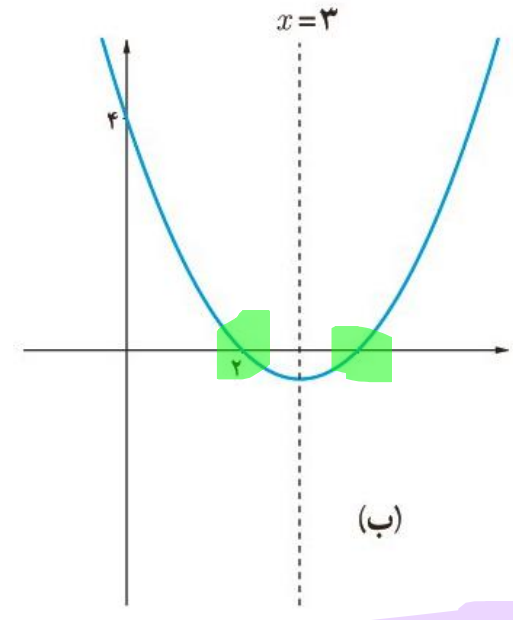
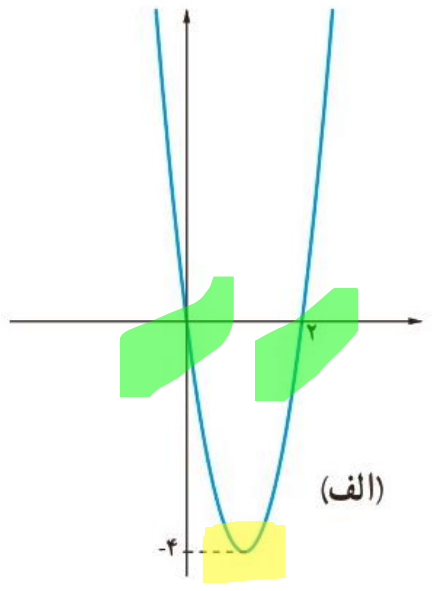


ریاضی یازدهم تجربی

(هندسه تحلیلی و جبر)

گام به گام فصل اول

علی هاشمی



$$y = ax^2 + bx + c$$

$$x = \frac{-b}{2a}$$

$$\begin{vmatrix} 0 & r & 1 \\ 0 & 0 & -f \end{vmatrix}$$

$$\begin{vmatrix} 0 & r & f \\ f & 0 & 0 \end{vmatrix}$$

$$c=0 / ra+rb=0 / a+b=-r$$

$$y = rx^2 - rx$$

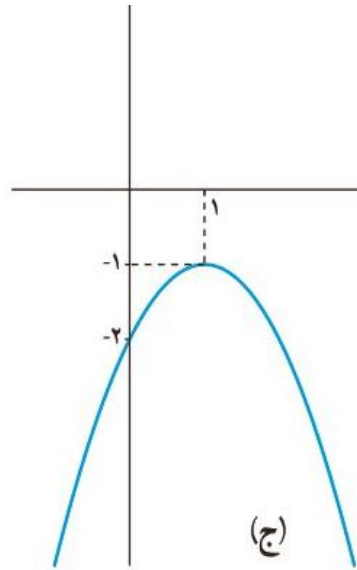
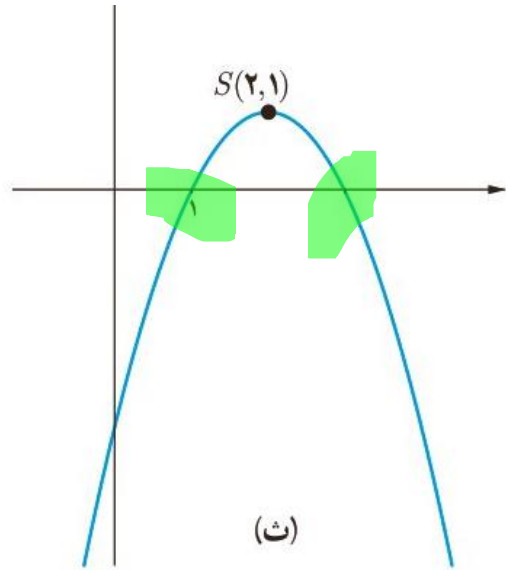
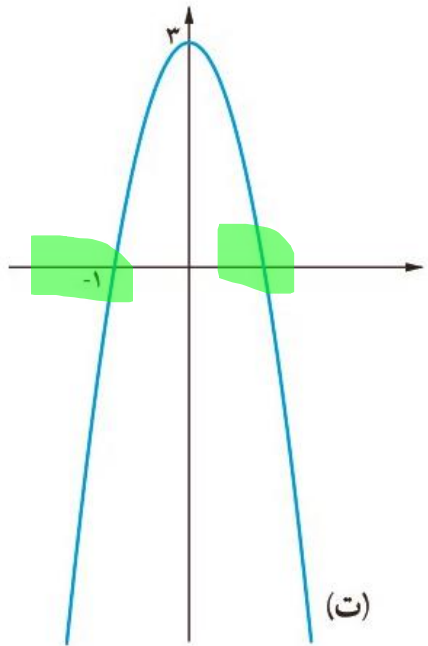
$$c=f / ra+rb+f=0 / ra+rb+f=0$$

$$y = \frac{1}{r}x^2 - rx + f$$

$$\begin{cases} a=r \\ b=-r \end{cases}$$

$$\begin{cases} a=\frac{1}{r} \\ b=-r \end{cases}$$

$$y = a(x-r)^2 \xrightarrow[\gamma=\Sigma]{x=0} f = ra \rightarrow a=1 \rightarrow y = x^2 - rx + f$$



$$y = ax^2 + bx + c$$

$$x = \frac{-b}{2a} = 1 \rightarrow b = -2a$$

$$L_{-1}^0 \rightarrow C = -2$$

$$y = a(x+1)(x-1) \xrightarrow[\substack{x=0 \\ y=r}]{\substack{x=0 \\ y=r}} r = -a \rightarrow a = -r \rightarrow y = -r(x^2 - 1)$$

$$y = a(x-1)(x-r) \xrightarrow[\substack{x=r \\ y=1}]{\substack{x=r \\ y=1}} 1 = a(1)(-1) \rightarrow a = -1 \rightarrow y = -(x-1)(x-r)$$

$$L_{-1}^1 \rightarrow a + b - r = -1 \rightarrow a = -1 \rightarrow b = r$$

$$y = -x^2 + rx - r$$

علی جیبرا سایت تخصصی ریاضی فیزیک

WWW.ALICEBRA.COM

AG

۰۹۱۲۷۷۴۴۲۸۱
۰۹۱۲۷۷۴۴۳۸۹

