

# ریاضی دہم تجربی

(تابع)

## گام بہ گام فصل پنجم

علی ہاشمی

# ALIGEBRA.COM

۰۹۱۲۷۷۴۴۲۸۱-۰۹۱۲۷۷۴۴۳۸۹

الف)  $y = x^2 - 3$

ب)  $y = -x^2 + 2$

ث)  $y = (x + 1)^2$

ج)  $y = |x| - \frac{1}{2}$

خ)  $y = -|x| - 2$

د)  $y = (x - 2)^2 + 3$

پ)  $y = |x|$

ت)  $y = -|x|$

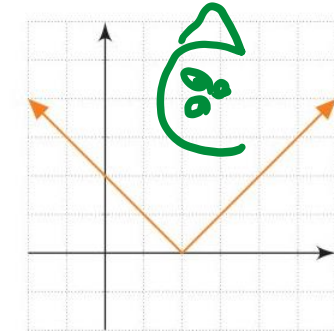
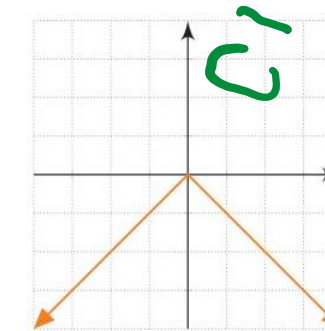
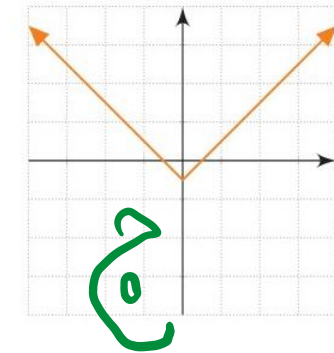
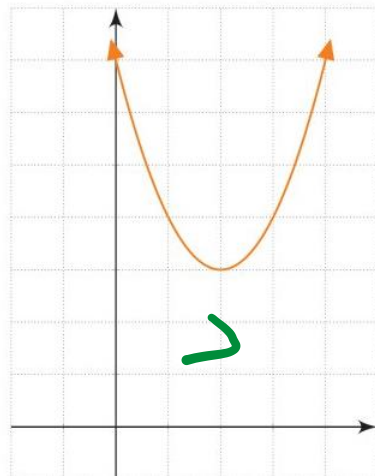
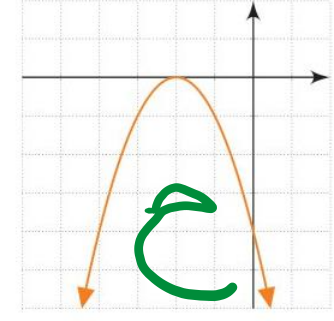
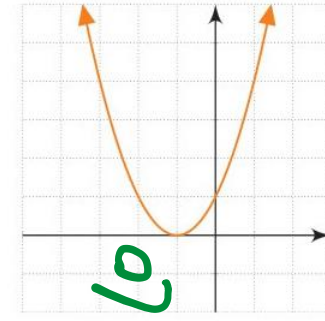
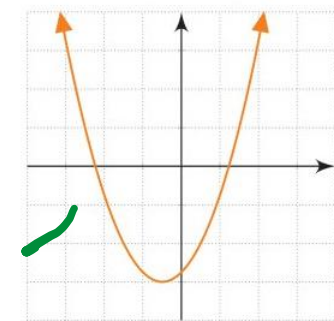
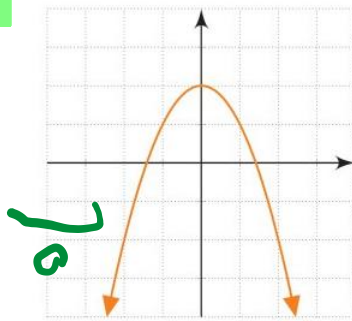
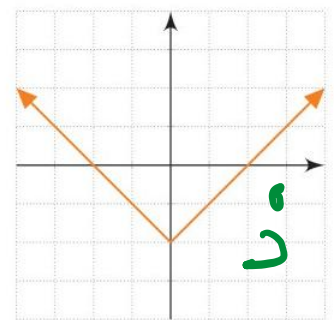
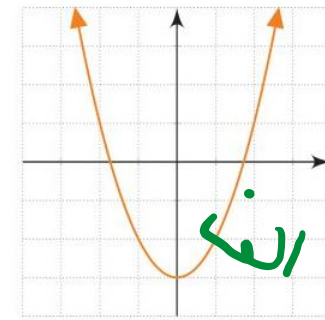
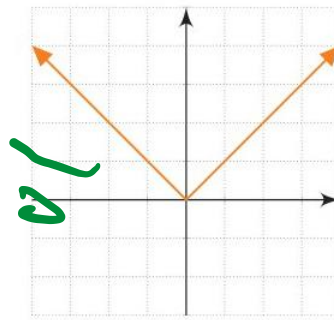
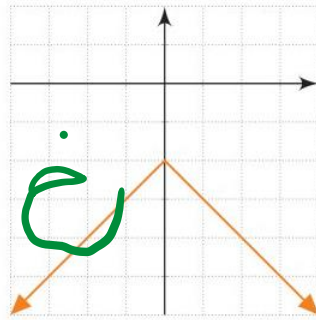
چ)  $y = |x - 2|$

ح)  $y = -(x + 2)^2$

ذ)  $y = |x| - 2$

ر)  $y = (x + \frac{1}{2})^2 - 3$

$D_f = \mathbb{R}$   
 $\mathbb{A}$



علی جیبرا سایت تخصصی ریاضی فیزیک

[WWW.ALICEBRA.COM](http://WWW.ALICEBRA.COM)

AG

۰۹۱۲۷۷۴۴۲۸۱  
۰۹۱۲۷۷۴۴۳۸۹

